

REV.	ECN NO.	LOCATIONS	DESCRIPTION	DATE	DESIGN
A0			NEW RELEASE	03/23'21	Sun

ORDERING INFORMATION

MCCFT - YV2NX (XX T)

① ② ③ ④

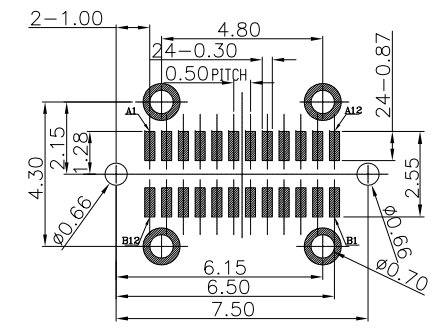
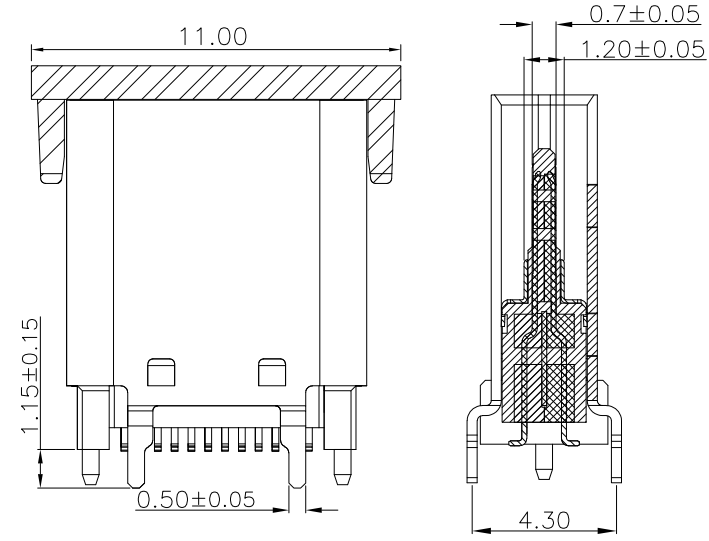
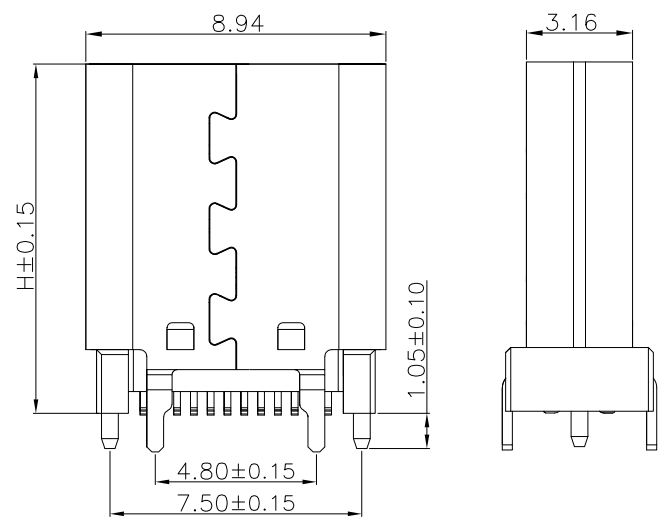
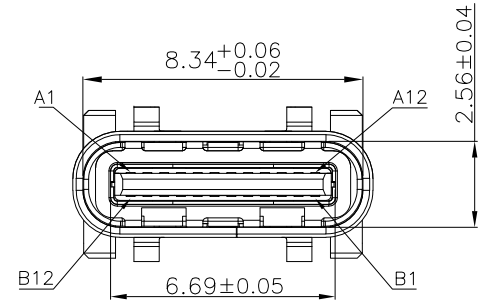
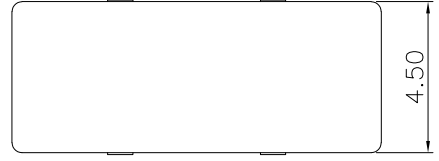
- ① **PRODUCT SERIES:**
USB C TYPE connector – Receptacle (Female) side.
- ② **ITEM NO.:**
Vertical- SMD 24pin
Standard on board type

CUSTOMER DRAWING

RoHS Compliant

- ③ **Height :**
See Table.
- ④ **GOLD PLATING :**
01: G/F”.

CAP Schematic Diagram:



RECOMMENDED P.C.B. LAYOUT (T:0.8mm)
TOLERANCE UNSPECIFIED ±0.05mm

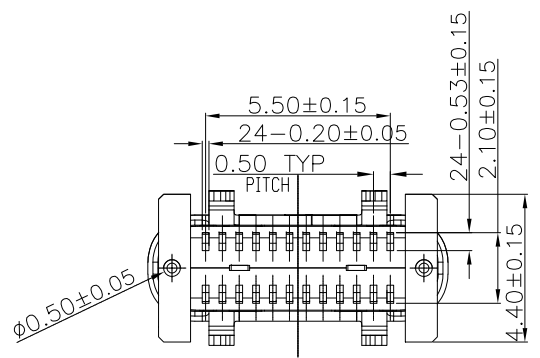


TABLE:

PRODUCT P/N	Height
MCCFT-YV2N1	H=8.80
MCCFT-YV2N2	H=9.30
MCCFT-YV2N3	H=10.00
MCCFT-YV2N4	H=10.50

NOTES:

1. MATERIAL:
 - (1) HOUSING: HIGH TEMP plastic, UL94 V-0.
 - (2) CONTACT: COPPER ALLOY.
 - (3) MID PLATE: STAINLESS STEEL.
 - (4) SHELL: STAINLESS STEEL.
2. PLATED:
 - (1) CONTACT: GOLD ON CONTACT AREA OVER NICKEL PLEATED OVER ALL.
 - (2) SHELL: NICKEL PLATED OVER ALL.
 - (3) MID PLATE: CLEAR ONLY
3. MECHANICAL PERFORMANCE,
 - 3-1.INSERTION FORCE: 5~20N.
 - 3-2.REMOVAL FORCE: 8~20N.
 - 3-3.DURABILITY: 10,000 CYCLES.
4. ELECTRICAL PERFORMANCE,
 - 4-1. CURRENT RATING:5.0A
 - 4-2. VOLTAGE RATING:20V
5. ENVIRONMENTAL PERFORMANCE:
 - OPERATING TEMPERATURE: -40°C~+85°C.

A1	A2	A3	A4	A5	A6	A7	A8	A9	A10	A11	A12
GND	TX1+	TX1-	Vbus	CC1	D+	D-	SBU1	Vbus	RX2-	RX2+	GND
B12	B11	B10	B9	B8	B7	B6	B5	B4	B3	B2	B1
GND	RX1+	RX1-	Vbus	SBU2	D-	D+	CC2	Vbus	TX2-	TX2+	GND

DIM	TOL
x.x	±0.30
x.xx	±0.25
x.xxx	±0.20

SUNFUN		SUNFUN TECHNOLOGY LTD			
DRAW NO.:	MCCFT-YV2N(A0)	DATE:	03/23'21	MATERIAL:	SEE NOTES
DESIGN:	Sun	FINISH:	SEE NOTES	DRAW NAME: USB C Type CONN - FEMALE Vertical- SMD 24pin Standard on board type	
CHECK:	Sun	FILE:	MCCFT-YV2N(A0)	MODEL: USB C TYPE CONN	
REVIEW:	Rui	P/N:	MCCFT-YV2N	UNIT:	mm
APPROVED:	Rui	REV.:	A0	SHEET:	1/1
		SCALE:			